

FABABODE

abode 1

Abode 1, the first release from Fababode, is a stylish, energy-efficient, and affordable fully prefabricated home. Perfect for a holiday house in bush or beachside locations, it is also an excellent option for your permanent residence.

Locally designed, manufactured and fully transportable, the completely finished Abode 1 comes complete with a pre-stressed concrete floor that is then set onto pre-prepared on-site footings, and connected to all services. The structural features include:

- Fully welded roof and wall steel stud framing
- interior walls and ceilings lined with plasterboard, painted with 2 coats of washable acrylic paint.
- Insulation to ceilings and walls complying with Australian Standards to maintain the homes energy and acoustic efficiency
- options for easy extension with other modules, or if needed, transportation to another site
- design flexibility to maximize the benefits of passive energy control principles, making your home more energy efficient, comfortable and cost-effective to run

The contemporary and elegant design of the 3 bedroom/1.5 bathroom Abode 1 interior includes:

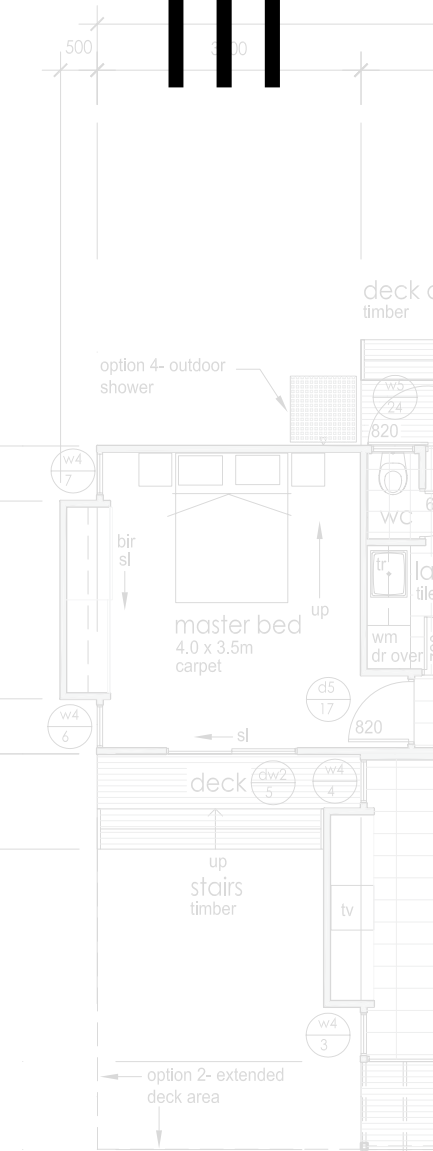
living space

- open plan, flexible living/dining/kitchen with galley kitchen and island bench
- contemporary finishes
- 2.5 metre built-in TV/entertainment cabinet and storage unit
- lofty raking ceilings

3 bedrooms

- quality 100% Australian wool carpets
- generous BIRs with doors and mirror
- flyscreens to windows
- ceiling fan

www.fababode.com



FofoABoDE

1.5 bathrooms:

- bathroom with bath and separate shower recess
- clear semi-frameless glass shower screens
- convenient separate WC located in laundry
- stylish, AAA-rated, water-conserving satin chrome tapware complying with Australian Standards.
- matching satin chrome towel rails
- white ceramic sanitary fixtures
- chrome floor wastes
- full length mirror above vanity

kitchen

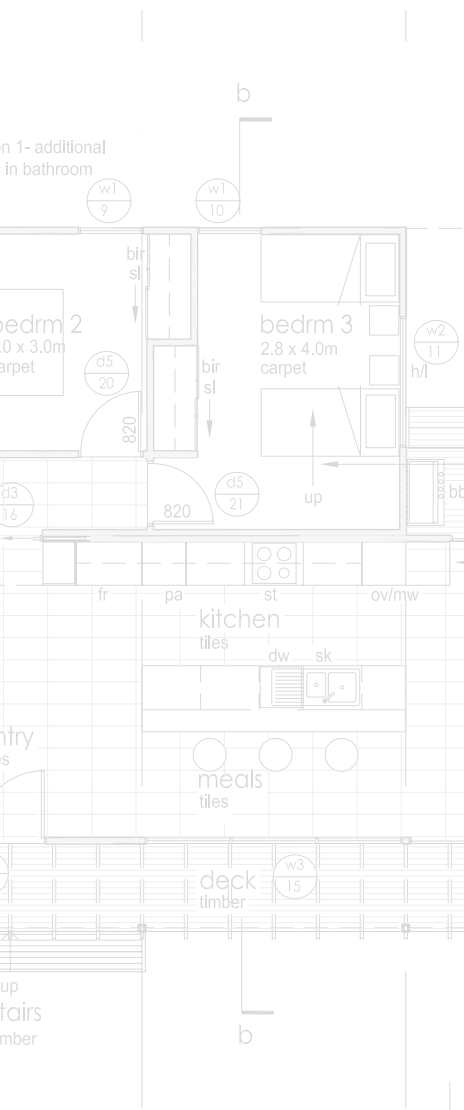
- Essa stone bench tops
- large open-plan living/kitchen/dining space
- gourmet kitchen with island bench/bar
- combination of convenient deep drawer units and cupboards
- generous pantry cupboard space.
- contemporary glass splashback
- stainless steel Bosch kitchen appliances - oven, cook top, and concealed range hood
- AAA-rated, water-conserving mixer tap
- 1 $\frac{3}{4}$ bowl stainless steel sink with pop-up waste outlets

laundry and wc

- separate laundry with space for clothes dryer
- generous amounts of built-in storage: linen cupboard, underbench and overhead cupboards, separate broom cupboard.
- contemporary WC with in-wall cistern and AAA-rated water-conserving flushing mechanism complying with Australian Standards

electrical

- Energy conserving, ceiling-recessed fluorescent light fittings
- data cable to computer nook
- exhaust fan in WC and exhaust fan and heat lamp in bathroom
- Reverse cycle ceiling fans in bedrooms and living area.



FABABODE

doors and windows

- commercial grade, powder coated, large sliding glass doors to living module
- commercial grade windows and external doors
- fly screens to all bedroom windows

general

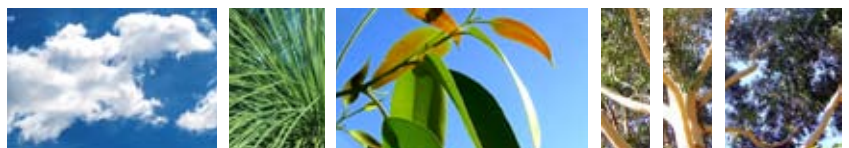
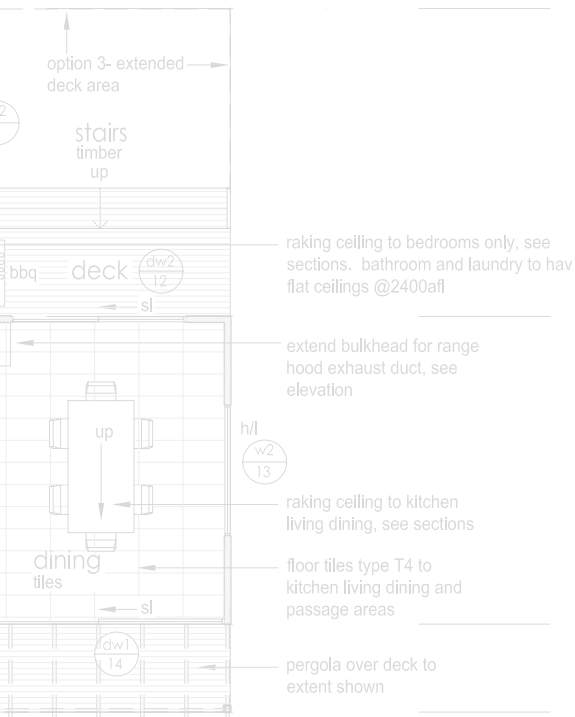
- large commercial sliding doors opening onto your view to bring the outside into your living space
- efficient building mass to minimise the need for additional winter heating
- contemporary, quality floor tiles to living module, laundry and bathroom
- some external decking and pergola

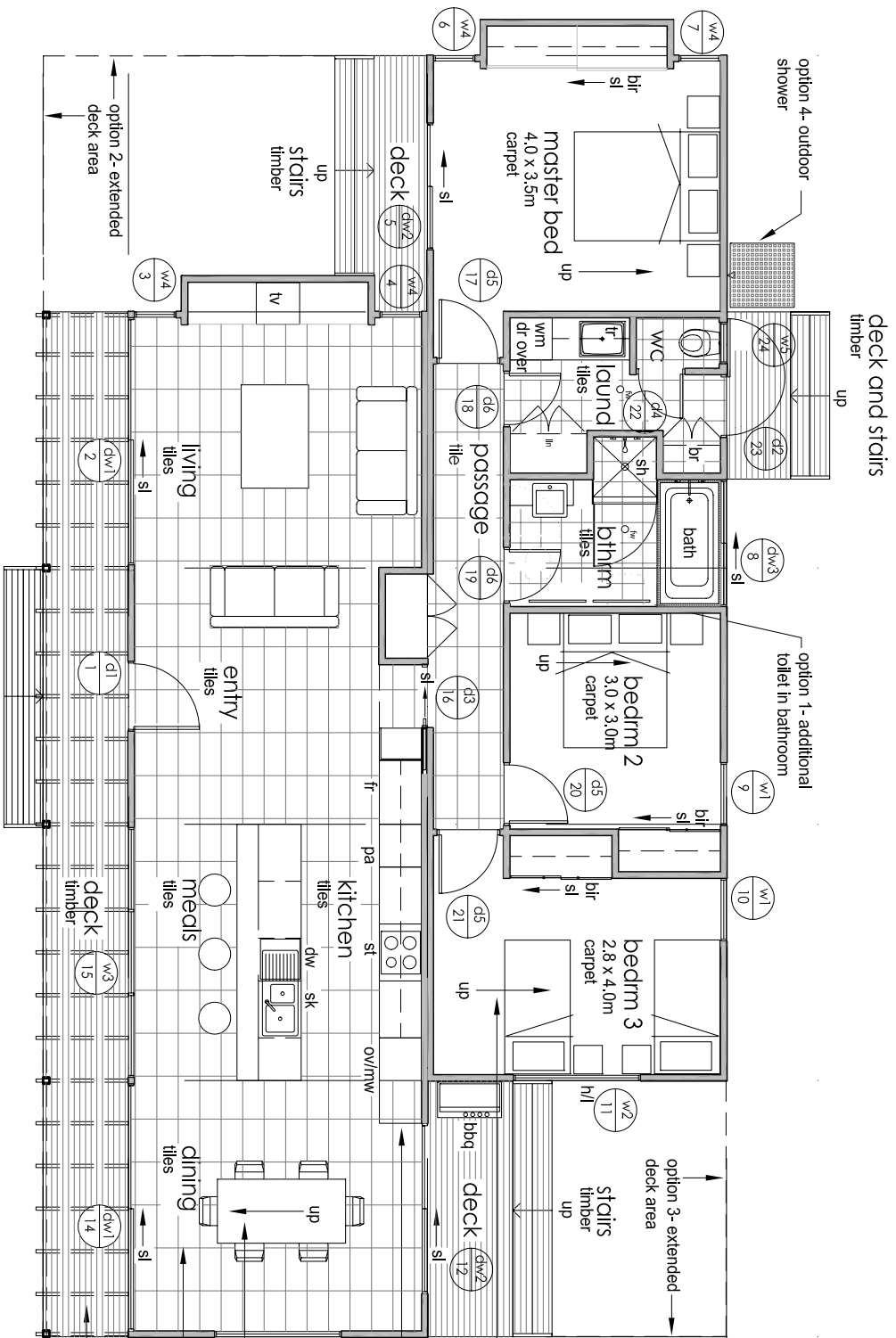
additional options available, but not included:

- choice of 2 internal colour schemes and finishes with additional internal upgrade options offering finishes of a higher level.
- an affordable, high-quality European stainless steel appliance package if more is required than kitchen cooking appliances
- heating options, i.e. underfloor heating
- window treatments
- grey water storage and recycling
- double glazing
- additional WC in bathroom
- flyscreens on all openings
- increased deck area
- outdoor shower
- Colourbond roof
- modifications to base building design

For more information, please email info@fababode.com

www.fababode.com





deck and stairs
timber
up

option 4- outdoor
shower

option 1- additional
toilet in bathroom

option 3- extended
deck area

- raking ceiling to bedrooms only, see sections, bathroom and laundry to have flat ceilings @2400afl
- extend bulkhead for range hood exhaust duct, see elevation
- raking ceiling to kitchen living dining, see sections
- floor tiles type T4 to kitchen living dining and passage areas
- pergola over deck to extent shown

www.fababode.com

